

BENEFITS FOR PEOPLE WITH EPILEPSY



There are various types of help available for people with epilepsy. Your family, friends or carer might also get help. Eligibility for benefits application depends on what your epilepsy is like and how it affects you.

Please visit each website for the most up-to-date information.



For further information, scan the QR code or visit:
thevoiceforepilepsy.co.uk



Registered with
**FUNDRAISING
REGULATOR**

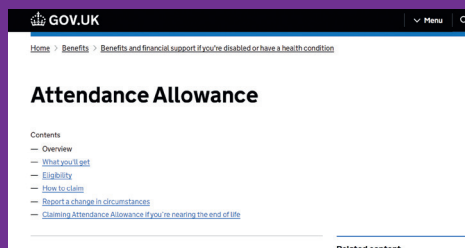
Carer's Allowance

If you have care needs and you get certain benefits, your carer may be able to get financial support.

To be eligible, all of the following must apply:

- They look after you at least 35 hours a week
- Age of 16 or over
- Not in full-time education
- 2 of the last 3 years UK residence, no immigration issues

www.gov.uk/carers-allowance



Attendance Allowance

Helps with extra costs if you have severe epilepsy that requires someone to help look after you. This allowance can be paid weekly depending on the level of care you need:

- Other benefits you receive can increase if you receive this allowance
- Only helps with personal support and does not cover mobility needs

You are eligible if you're both:

- Physically or mentally disabled
- Of state pension age or older

www.gov.uk/attendance-allowance

Access to Work

If the help you need at work is not covered by your employer making reasonable adjustments you can try to apply for Access to Work grant. You need to be employed, or about to start work or return to one to be qualified for the grant. Access to Work can aid with:

- Special equipment, adaptations
- Help getting to and from work
- Support worker services
- Mental health support

www.gov.uk/access-to-work



Disability Living Allowance (DLA)

Help with extra costs for children (under 16) with substantial care needs

- Rate varies and depends on child's needs
- Has 2 components: care component and mobility component

www.gov.uk/disability-living-allowance-children

Disabled Persons Railcard

Having epilepsy entitles you to get 1/3 off rail travel for you and a friend. You could save an average of £131 a year.

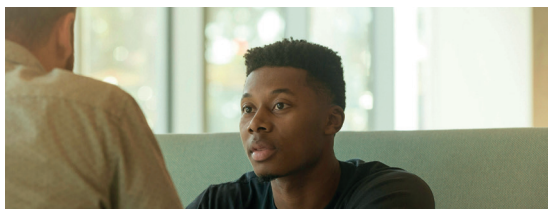
www.disabledpersons-railcard.co.uk

Disabled Facilities Grants

Financial help if you need to make changes to your home to accommodate for your disability needs:

- Can widen doors, install ramps, add lighting controls, etc.
- Grant depends on your household income and savings

www.gov.uk/disabled-facilities-grants



Employment and Support Allowance (ESA)

Helps if epilepsy affects how much you can work. You can get:

- Money to help with living costs if you're unable to work
- Support to get back into work if you're able to
- Employed, self-employed or unemployed are all eligible to apply

www.gov.uk/employment-support-allowance



Blue Badge Scheme

Allows you to park nearer to your destination if you have severe mobility disability. Usually lasts up to 3 years. Costs vary across England, Scotland and Wales. What you'll need to apply:

- Proof of identity
- Proof of address
- Proof of benefits
- National insurance number

www.gov.uk/apply-blue-badge

Bus/train pass

You may be entitled to free or reduced-price bus travel:

England: English National Concessionary Travel Scheme
www.gov.uk/apply-for-disabled-bus-pass

Scotland: National Entitlement Card (NEC)
www.nec.scot/apply-now

Wales: Concessionary Travel Card
portal.tfw.wales/en

Northern Ireland:
www.nidirect.gov.uk/articles/half-fare-smartpass-driving-licence-refused

Medical exemption certificates

If your epilepsy require continuous anticonvulsive therapy, you can apply for a medical exemption certificate and get free NHS prescriptions.

- Certificate doesn't cover dental treatment or other health costs
- Required when you collect a prescription
- Valid for five years or until your 60th birthday, whichever is sooner
- Penalty charges incur if you claim free prescriptions after certificate expires

www.nhsbsa.nhs.uk/check-if-you-have-nhs-exemption/medical-exemption-certificates

Personal Independence Payment (PIP)

Get help with some of the extra costs if your epilepsy makes daily living or getting around difficult. You must be aged 16 or over and not reached state pension age.

- Difficulties should have lasted for 3 months and you expect them to continue for at least 9 months
- What you can get can vary depending on how epilepsy affects you
- PIP is divided into 2 parts: daily living and mobility
- You'll be assessed by a health professional and have regular rate review to make sure you get the right help

www.gov.uk/pip



For further information, scan the QR code or visit:
thevoiceforepilepsy.co.uk



Registered with
**FUNDRAISING
REGULATOR**